

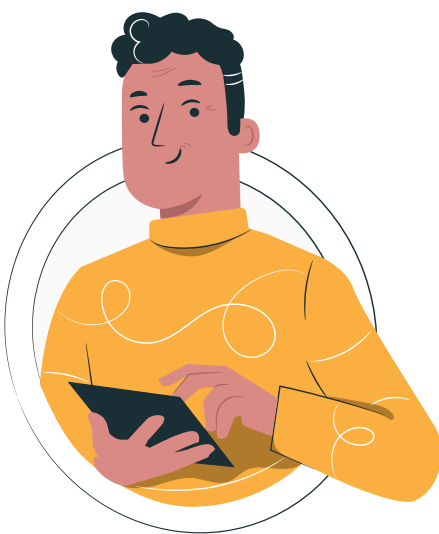


GBTA Empire Affiliate COMPENSATION PLAN



TOM

NORMAL COMMISSION



If TOM is an
Affiliate rank he
earns

**15% of
\$199**

\$29.85

If TOM is a
Crown Affiliate
rank he earns

**17% of
\$199**

\$33.83

If TOM is an
Ambassador
rank he earns

**20% of
\$199**

\$39.80

If TOM is a **Crown
Ambassador** rank
he earns

**24% of
\$199**

\$47.76

GBTA EMPIRE ADVANCED PLATINUM PLAN

TOM signs up for the GBTA Empire Affiliate programme and progresses to become a Royal Ambassador, he shares his link and a customer buys the Advanced Platinum package, he earns **24% commission**.

TIER 2 PAYOUTS

(TOM is a Royal Ambassador: **24% Normal commission, 15% Tier-2 commission** and KATE is a Crown Affiliate.)

TOM signs up to the GBTA Empire Affiliate programme, he signs up KATE as a Sub-Affiliate and KATE makes a sale (of the Advanced Platinum package \$199), if KATE is a Crown Affiliate she earns \$33.83 which is 17% normal commission but TOM is paid 15% of KATEs commission, i.e $15\% \times \$33.83 = \5.07 .

TOM



KATE



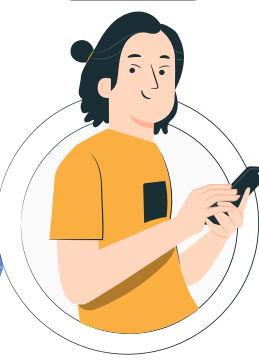
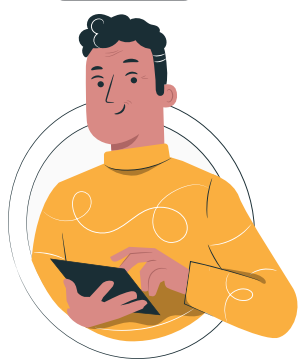
Total commission:

TOM is paid \$47.76 + \$5.07 = \$52.83

TOM

KATE

BEN



(TOM is a Royal Ambassador: **24% Normal commission, 15% Tier-2 commission, 12% Tier-3 commission** and BEN is a Crown Affiliate)

Total commission to TOM:

\$47.76 + \$4.06 = \$51.82

TIER 3 PAYOUTS

TOM signs up to the GBTA Empire Affiliate programme, he signs up KATE as a Sub-Affiliate and KATE signs up BEN as a Sub-Affiliate who makes a sale (of the Advanced Platinum package \$199), if BEN is a Crown Affiliate, TOM is paid 12% of BENs commission, i.e $12\% \times \$33.83 = \4.06

RANKING SYSTEM

An **Affiliate** is one who has made between

**1 to
40 sales**

A **Crown Affiliate** is one who has made between

**41 to
150 sales**

An **Ambassador** is one who has made between

**150 to
300 sales**

A **Royal Ambassador** is one who has made between

**301+
sales**